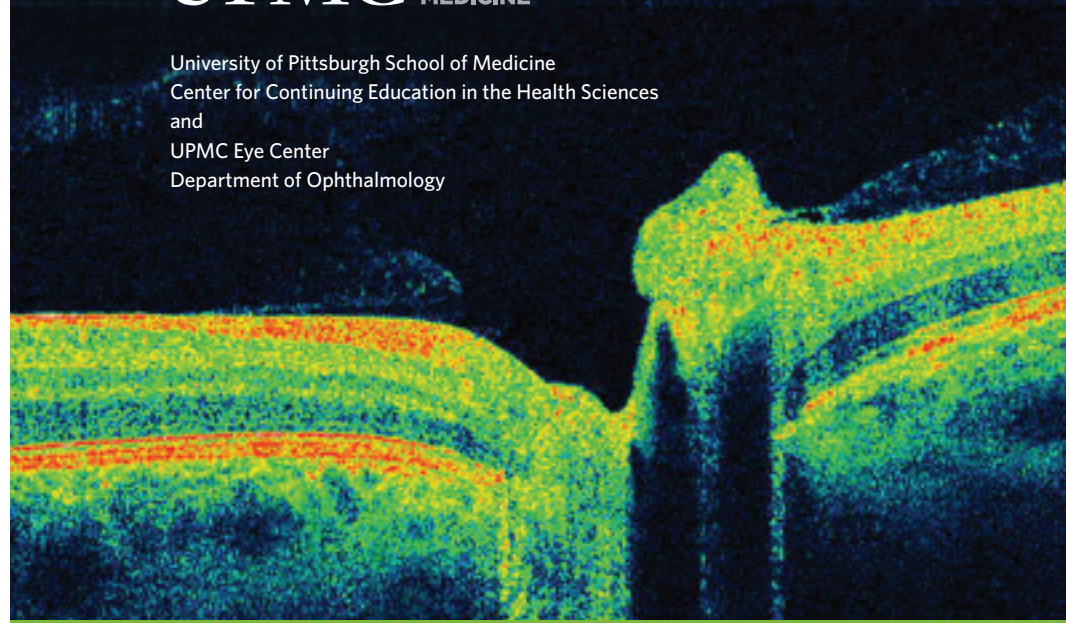


Clinical Applications of Optical Coherence Tomography (OCT)

Saturday, July 14, 2012

UPMCPHysicianResources.com/OCT2012



Clinical Applications of Optical Coherence Tomography (OCT)

Saturday, July 14, 2012

Fairmont Hotel Pittsburgh (Downtown)
Pittsburgh, Pennsylvania

Course Director

Joel S. Schuman, MD, FACS
Eye & Ear Foundation Professor and Chairman,
Department of Ophthalmology
University of Pittsburgh School of Medicine
Director, UPMC Eye Center
Professor of Bioengineering

Overview

Optical Coherence Tomography (OCT) is a technology that allows high resolution cross-sectional imaging of the retina. This technology facilitates diagnosis of glaucoma and retinal diseases, and is helpful in anterior segment and neuro-ophthalmic disorders as well. With the aid of OCT, objective quantitative assessment of tissue structure is possible, permitting more accurate and earlier diagnosis and treatment.

This course is designed to instruct participants on the proper use and interpretation of OCT in glaucoma, retinal disease and neuro-ophthalmic pathologies, as well as in anterior segment pathologies and the pre-surgical cataract patient. Through didactic instruction and hands-on experience, participants will learn the appropriate settings in which to make use of OCT, and will benefit from one-on-one instruction on OCT analysis.

Objectives

At the conclusion of this course, the participant will be able to:

- Discuss the basic principles behind OCT imaging;
- Recognize OCT patterns of macular disease and how to use this information to guide clinical decision making;
- Identify nerve fiber layer pathology as well as optic disc structural changes elucidated by OCT, and how to interpret these changes in the overall management of glaucoma patients;
- Conduct and interpret OCT scans following the hands-on OCT workshop.

Participation in the workshop does not imply competence in OCT testing. The hands-on workshop will provide attendees with the opportunity to practice OCT testing techniques.

Who Should Attend

This course is geared toward the comprehensive ophthalmologist, retina and glaucoma specialists, cornea specialists and neuro-ophthalmologists.

Continuing Education Credit

The University of Pittsburgh School of Medicine is accredited by the Accreditation Council for Continuing Medical Education to provide continuing medical education for physicians.

The University of Pittsburgh School of Medicine designates this live activity for a maximum of **6.25 AMA PRA Category 1 Credits™**. Each physician should only claim credit commensurate with the extent of their participation in the activity.

Other health care professionals are awarded **0.6** continuing education units (CEU's) which are equal to **6.25** contact hours.

Meeting Location

The conference will be held at the **Fairmont Hotel Pittsburgh** located at 510 Market Street, Pittsburgh, PA 15222.

Overnight Accommodations

The conference has contracted a limited number of hotel rooms at the Fairmont Pittsburgh for conference attendees. You may book a room by calling the hotel at **1 (800) 441-1414** and asking for the *OCT Course room block* in order to receive our reduced rates. The special reduced rate is \$219 deluxe. These accommodations are not included in registration fee. *If you experience any problems booking your room, please telephone the UPMC Eye Center at (412) 683-7551 or (412) 647-2256.* Room availability cannot be guaranteed beyond the contracted block end date of 12:00 PM **June 13, 2012**.

Special Needs



Participation by all individuals is encouraged. Advance notification of any special needs will help us provide better service. Please notify us of your needs **at least two weeks** in advance of the program by calling (412) 683-7551 or (412) 647-2256.

Schedule – Saturday, July 14, 2012

| | |
|----------|--|
| 7:30 am | Registration / Breakfast |
| 8:00 am | Introduction Joel S. Schuman, MD, FACS |
| 8:10 am | Advances in OCT Technology James G. Fujimoto, PhD |
| 8:30 am | Basic Considerations in the Use of SD-OCT Carmen A. Puliafito, MD, MBA |
| 8:50 am | OCT of the Vitreomacular Interface Jay S. Duker, MD |
| 9:10 am | OCT in the Management of Age-Related Macular Degeneration Carmen A. Puliafito, MD, MBA |
| 9:30 am | Imaging Drusen with OCT Thomas R. Friberg, MD, FACS |
| 9:50 am | Break |
| 10:05 am | OCT in the Management of Diabetic Retinopathy Jay S. Duker, MD |
| 10:25 am | Imaging the Macula in Retinal Dystrophies Thomas R. Friberg, MD, FACS |
| 10:45 am | Panel Discussion: Retina Case Presentations Moderator: Carmen A. Puliafito, MD, MBA |
| 11:40 am | OCT for Cataract Surgery Carmen A. Puliafito, MD, MBA |
| Noon | Lunch |

| | |
|---------|--|
| 1:00 pm | Basics of OCT for Glaucoma Detection and Progression Joel S. Schuman, MD, FACS |
| 1:20 pm | Clinical Pearls in the Use of SD-OCT in Glaucoma Management Eiyass Albeiruti, MD |
| 1:40 pm | Anterior Segment OCT Hiroshi Ishikawa, MD |
| 2:00 pm | Panel Discussion: Glaucoma Case Presentations Moderator: Kimberly V. Miller, MD |
| 2:30 pm | OCT of Schlemm's Canal and the Aqueous Outflow System Larry Kagemann, PhD |
| 2:40 pm | OCT of Corneal Stem Cells Kira L. Lathrop, MAMS |
| 2:50 pm | Break |
| 3:05 pm | OCT in Children Ken K. Nischal, MD, FRCOphth |
| 3:25 pm | OCT for Neuro-Ophthalmology Gabrielle R. Bonhomme, MD |
| 3:45 pm | Conference Adjournment |
| 3:50 pm | OCT Workshop* |

*Optional, CME Credit is not awarded.

Schedule is subject to change.

The University of Pittsburgh, as an educational institution and as an employer, values equality of opportunity, human dignity, and racial/ethnic and cultural diversity. Accordingly, the University prohibits and will not engage in discrimination or harassment on the basis of race, color, religion, national origin, ancestry, sex, age, marital status, familial status, sexual orientation, disability, or status as a disabled veteran or a veteran of the Vietnam era. Further, the University will continue to take affirmative steps to support and advance these values consistent with the University's mission. This policy applies to admissions, employment, access to and treatment in University programs and activities. This is a commitment made by the University and is in accordance with federal, state, and/or local laws and regulations. For information on University equal opportunity and affirmative action programs and complaint/grievance procedures, please contact: William A. Savage, Assistant to the Chancellor and Director of Affirmative Action (and Title IX and 504 Coordinator), Office of Affirmative Action, 901 William Pitt Union, University of Pittsburgh, Pittsburgh, PA 15260, (412) 648-7860.

Course Director and Faculty

COURSE DIRECTOR

Joel S. Schuman, MD, FACS

Eye & Ear Foundation Professor and
Chairman, Department of Ophthalmology
Director, UPMC Eye Center
Professor of Bioengineering

GUEST FACULTY

Jay S. Duker, MD

Chairman, Department of Ophthalmology
Ophthalmologist-in-Chief;
Vitreoretinal Diseases & Surgery Services
Professor, Tufts University School of Medicine
Boston, MA

James G. Fujimoto, PhD

Professor of Electrical Engineering
Massachusetts Institute of Technology
Cambridge, MA

Carmen A. Puliafito, MD, MBA

Dean, Keck School of Medicine
May S. and John Hooval Dean's
Chair in Medicine
Professor of Ophthalmology &
Health Management
University of Southern California
Los Angeles, CA

*In accordance with Accreditation Council for
Continuing Medical Education requirements
on disclosure, information about relationships
of presenters with commercial interests (if any)
will be included in materials distributed at
the time of the conference.*

*The Course Director and all Local Faculty are affiliated with the University of Pittsburgh School of Medicine
and reside in the Pittsburgh, PA, metropolitan area.*

LOCAL FACULTY

Eiyass Albeiruti, MD

Assistant Professor of Ophthalmology

Gabrielle R. Bonhomme, MD

Assistant Professor of Ophthalmology
Director, Neuro-Ophthalmology Service

Thomas R. Friberg, MD, FACS

Professor of Ophthalmology and Bioengineering
Department of Bioengineering
Director, Medical and Surgical Retinal Diseases

Hiroshi Ishikawa, MD

Assistant Professor of Ophthalmology and
Bioengineering
Department of Bioengineering
Director, Ocular Imaging Center

Larry Kagemann, PhD

Research Assistant Professor of
Ophthalmology and Bioengineering
Department of Bioengineering

Kira L. Lathrop, MAMS

Research Instructor

Kimberly V. Miller, MD

Assistant Professor of Ophthalmology
Glaucoma and Anterior Segment
Surgery Service

Ken K. Nischal, MD, FRCOphth

Chief, Division of Pediatric Ophthalmology,
Strabismus, and Adult Motility
Director, Pediatric Program Development
UPMC Eye Center, Children's Hospital of
Pittsburgh of UPMC
Professor of Ophthalmology

Registration Information

Online Registration

Registering online is the quickest and easiest way to reserve your space at CCEHS conferences.

- Visit our online registration site at <https://ccehs.upmc.com/liveFormalCourses.jsf>
- Click the Registration button and enter all the requested information (including an email address and follow the prompts to submit your registration after entering your payment information.
- Print the automatic electronic registration confirmation email sent to the email address you provided us when you registered. If you do not receive this confirmation, please contact us at (412) 647-8313.

Paper Registrations by Fax or Mail *(see contact information below)*

If you are unable to register online please submit a request for paper form. UPMC employees whose registration fee will be remitted via journal transfer must request the paper registration form.

A confirmation letter will be faxed or mailed if registration is completed through the mail or fax by the pre-registration deadline. If you register online, you will receive an immediate email confirmation message.

Please note: Registration is not complete until you receive this confirmation. If you do not receive this letter within 5-7 days of registration, please contact us at (412) 647-8313 or (412) 683-7551.

You must bring this confirmation letter with you to the conference.

Registration Fee: \$150

Registration fee includes (for conference registrants only):

- Continuing education credit
- Registration and course materials
- Continental breakfast, refreshments and lunch

Cancellation

All cancellations must be in writing and sent to us via U.S. mail, email or fax. Tuition for cancellations postmarked or date stamped before or on **June 15, 2012** will be completely refunded. After **June 15, 2012**, a \$35 administrative fee will be assessed. No refunds will be made after **June 20, 2012**. Cancellation requests can be made to:

Mary Lindenfelder, GME Sr. Department Manager
UPMC Eye Center
203 Lothrop Street, Suite 821.1, Pittsburgh, PA 15213
Phone: (412) 683-7551 – Fax: (412) 647-5119 – Email: lindenfelderme@upmc.edu

The UPMC Center for Continuing Education in the Health Sciences reserves the right to cancel this program if sufficient registrations are not received. In the case of cancellation, the department will fully refund registration fees.

For additional information, contact:

Mary Lindenfelder
GME Sr. Department Manager
(412) 683-7551
lindenfelderme@upmc.edu

Siobahn Gallagher
Senior Business Analyst
(412) 647-2256
gallaghersa@upmc.edu