

# The Ocular Hypertension Treatment Study **ARCHIVES EXPRESS**

## *A Randomized Trial Determines That Topical Ocular Hypotensive Medication Delays or Prevents the Onset of Primary Open-Angle Glaucoma*

Michael A. Kass, MD; Dale K. Heuer, MD; Eve J. Higginbotham, MD; Chris A. Johnson, PhD; John L. Keltner, MD; J. Philip Miller, AB; Richard K. Parrish II, MD; M. Roy Wilson, MD; Mae O. Gordon, PhD;  
for the Ocular Hypertension Treatment Study Group

**Background:** Primary open-angle glaucoma (POAG) is one of the leading causes of blindness in the United States and worldwide. Three to 6 million people in the United States are at increased risk for developing POAG because of elevated intraocular pressure (IOP), or ocular hypertension. There is no consensus on the efficacy of medical treatment in delaying or preventing the onset of POAG in individuals with elevated IOP. Therefore, we designed a randomized clinical trial, the Ocular Hypertension Treatment Study.

**Objective:** To determine the safety and efficacy of topical ocular hypotensive medication in delaying or preventing the onset of POAG.

**Methods:** A total of 1636 participants with no evidence of glaucomatous damage, aged 40 to 80 years, and with an IOP between 24 mm Hg and 32 mm Hg in one eye and between 21 mm Hg and 32 mm Hg in the other eye were randomized to either observation or treatment with commercially available topical ocular hypotensive medication. The goal in the medication group was to reduce the IOP by 20% or more and to reach an IOP of 24 mm Hg or less.

**Main Outcome Measures:** The primary outcome was the development of reproducible visual field abnormality

or reproducible optic disc deterioration attributed to POAG. Abnormalities were determined by masked certified readers at the reading centers, and attribution to POAG was decided by the masked Endpoint Committee.

**Results:** During the course of the study, the mean  $\pm$  SD reduction in IOP in the medication group was  $22.5\% \pm 9.9\%$ . The IOP declined by  $4.0\% \pm 11.6\%$  in the observation group. At 60 months, the cumulative probability of developing POAG was 4.4% in the medication group and 9.5% in the observation group (hazard ratio, 0.40; 95% confidence interval, 0.27-0.59;  $P < .0001$ ). There was little evidence of increased systemic or ocular risk associated with ocular hypotensive medication.

**Conclusions:** Topical ocular hypotensive medication was effective in delaying or preventing the onset of POAG in individuals with elevated IOP. Although this does not imply that all patients with borderline or elevated IOP should receive medication, clinicians should consider initiating treatment for individuals with ocular hypertension who are at moderate or high risk for developing POAG.

*Arch Ophthalmol.* 2002;120:701-713

**S**URVEYS SHOW that glaucoma is among the leading causes of blindness in the United States and worldwide.<sup>1-5</sup> It is estimated that more than 2.5 million people in the United States have glaucoma and that more than 130 000 people are legally blind from the disease.<sup>4</sup> Population surveys indicate that less than 50% of those with glaucomatous visual field loss have received an appropriate diagnosis or treatment.<sup>6-8</sup>

Glaucoma is the leading cause of blindness in individuals of West African origin.<sup>2,9-12</sup> In the Baltimore Eye Survey,<sup>2</sup> the age-adjusted prevalence rates of primary open-angle glaucoma (POAG) were 4 to 5 times higher in African Americans than in white individuals. The prevalence ranged

from 1.2% in African Americans between the ages of 40 and 49 years to 11.3% in those 80 years and older.<sup>11</sup> Furthermore, the Barbados Eye Study<sup>7,12</sup> found a high prevalence and incidence of glaucoma among black individuals in an Afro-Caribbean population.

*See also pages 714  
and 829*

It is estimated that 3 to 6 million people in the United States, including 4% to 7% of those older than 40 years, have elevated intraocular pressure (IOP) without detectable glaucomatous damage on standard clinical tests.<sup>13</sup> These individuals are at increased risk for developing POAG and are sometimes referred to as ocular hypertensives or glaucoma suspects.<sup>13-15</sup> Kerrigan-Baumrind et al<sup>16</sup> re-

*Author affiliations are listed at the end of this article. A complete list of the participants in this study appears on page 709. A list of financial disclosures appears on page 712.*

## PARTICIPANTS AND METHODS

The design and methods of the OHTS were described previously,<sup>32-35</sup> can be found on the World Wide Web at [www.vrcc.wustl.edu](http://www.vrcc.wustl.edu), and are briefly summarized as follows.

### PARTICIPANTS

Eligibility criteria included age between 40 and 80 years, a qualifying IOP between 24 mm Hg and 32 mm Hg in one eye and between 21 mm Hg and 32 mm Hg in the other eye, gonioscopically open angles, 2 normal and reliable visual field tests per eye as determined by the Visual Field Reading Center, and normal optic discs seen at clinical examination and on stereoscopic photographs as determined by the Optic Disc Reading Center. Exclusion criteria included a visual acuity worse than 20/40 in either eye, previous intraocular surgery (other than uncomplicated cataract extraction with posterior chamber lens implantation), and diabetic retinopathy or other diseases capable of causing visual field loss or optic disc deterioration. Both eyes of each participant had to meet eye-specific eligibility criteria. Participants signed a statement of informed consent approved by the institutional review board of each participating clinic.

### STUDY DESIGN

This study was conducted at 22 clinical centers; eligible individuals were randomized in equal proportion to either the medication group or observation group. Randomization assignments were released by the Coordinating Center during the participant's baseline visit. The randomization unit was the individual, and randomization was performed using a permuted block design stratified by clinic and race. Neither the participant nor the clinician was masked to the randomization assignment during follow-up.

Participants randomized to medication began treatment to achieve a target IOP of 24 mm Hg or less and a minimum 20% reduction in IOP from the average of the qualifying IOP and IOP at the baseline randomization visit, except that an IOP of less than 18 mm Hg was not required. Topical medication was changed and/or added until both of these goals were met or the participant was receiving maximum-tolerated topical medical therapy. Medications were added and changed in one-eyed therapeutic trials. Drugs were distributed to clinics from the study's central pharmacy, which included all topical ocular hypotensive medications commercially available in the

United States. As new medications became commercially available, they were added to the study formulary.

Follow-up visits were scheduled every 6 months from the date of randomization. Each semiannual examination included an ocular and medical history, refraction, best-corrected visual acuity, full-threshold Humphrey white-on-white 30-2 visual field tests, slitlamp examination, IOP measurement, and direct ophthalmoscopy. Additional evaluations at annual visits included a dilated fundus examination and stereoscopic optic disc photographs.

Information on adverse effects was collected using diverse sources of information. Prior to each examination, the participants completed the Glaucoma Symptom Scale,<sup>36</sup> a checklist of 13 ocular symptoms and 15 systemic symptoms. They rated the "bothersomeness" of symptoms on a scale of 1 to 4: from 1, "not at all," to 4, "a lot." At annual visits, participants completed the Medical Outcomes Study Short Form (SF-36),<sup>37</sup> a survey of 36 questions designed to measure health-related quality of life. At each visit, clinic staff recorded medical and ocular history and completed an adverse-event form when a new health problem was diagnosed, an existing medical condition worsened, an inpatient hospitalization had occurred, or surgery had been required. Clinic staff recorded the organ system affected and determined the severity of the condition. Clinicians judged whether the event was related to the study medication. Serious adverse events were defined as death, cancer or other life-threatening conditions, inpatient hospitalization, prolongation of hospitalization, or outpatient hospitalization for an incapacitating condition. Clinic personnel obtained hospital discharge summaries and death certificates. In January 1997, the OHTS protocol for reporting adverse events was made more rigorous because of large clinic-to-clinic variation in the completion of the adverse-event forms. Therefore, data from the adverse-event forms are reported from January 1997 to the present.

### PRIMARY OUTCOME AND MONITORING

The primary outcome was the development of POAG in one or both eyes. This was defined as reproducible visual field abnormality or reproducible clinically significant optic disc deterioration attributed to POAG by the masked Endpoint Committee.

Development of visual field abnormality was determined by masked certified readers at the Visual Field Reading Center. A technically acceptable visual field was considered abnormal if  $P < .05$  for the corrected pattern standard deviation or if the glaucoma hemifield test result was

ported that a substantial percentage of the optic nerve fibers are lost before glaucomatous visual field defects can be detected with routine perimetry.

The study of Kerrigan-Baumrind and colleagues, together with the high prevalence of glaucoma and the potentially serious consequences of this disease, could suggest the need for early detection and treatment. However, there is no consensus on the efficacy of medical treatment in delaying or preventing the onset of POAG among individuals with elevated IOP.<sup>17-31</sup> Furthermore, it is unclear whether the benefits of treatment outweigh the potential risks of long-term ocular hypotensive medication use. Therefore, the Ocular Hypertension Treatment

Study (OHTS) was designed to evaluate the safety and efficacy of topical ocular hypotensive medication in delaying or preventing the onset of POAG in individuals with elevated IOP.

## RESULTS

### RECRUITMENT AND BASELINE CHARACTERISTICS OF PARTICIPANTS

Recruitment was extended from 24 months to 30 months to achieve an enrollment of 400 African American participants. Between February 28, 1994, and October 31, 1996,

outside normal limits according to StatPac 2 statistical software (StatPac Inc, Minneapolis, Minn). Because most abnormal visual fields were found to be normal when retested,<sup>38</sup> the protocol was changed (effective June 1, 1997) so that an endpoint required 3 consecutive abnormal results on visual field tests with the same type, location, and index of abnormality. If a visual field test was judged to be abnormal, the test was repeated at the next visit approximately 6 months later. If the second visual field test was judged to be abnormal, a third visual field test was performed 1 day to 8 weeks later. If 3 consecutive visual field tests met the criteria for abnormality, the Visual Field Reading Center initiated the endpoint review process. Additional details about the process of reviewing visual fields were provided in a previously published article.<sup>34</sup>

Optic disc deterioration was determined by masked certified readers at the Optic Disc Reading Center. Optic disc deterioration was defined as a generalized or localized thinning of the neuroretinal rim compared with baseline stereoscopic optic disc photographs in side-by-side comparisons. The readers were masked as to which set of photographs was taken at baseline and which set was taken at a follow-up visit. If 1 or both readers in the Optic Disc Reading Center detected a difference between the baseline and follow-up photographs, the photographs were reviewed in a masked fashion by a senior reader. If the senior reader agreed that deterioration had occurred, the Optic Disc Reading Center requested that the affected eye be rephotographed to confirm the change. If readers masked to the result of the first comparison confirmed the deterioration in the second set of photographs, the Optic Disc Reading Center initiated the endpoint review process. The classification of progression in a quality control sample of 86 eyes (50 normal eyes and 36 with progression) showed test-retest agreement at  $\kappa = 0.70$  (95% confidence interval [CI], 0.55-0.85). Additional details about the process of reviewing optic disc photographs were provided in a previously published article.<sup>35</sup>

The purpose of the endpoint review process was to distinguish glaucomatous optic nerve and visual field changes from changes due to other causes. The members of the Endpoint Committee were masked to the randomization assignments of the study participants. Each member of the Committee independently reviewed the participant's ocular and medical history, visual fields, and stereoscopic optic disc photographs of both eyes from baseline to the date of review. The Endpoint Committee determined whether visual field changes were due to POAG and whether optic disc deterioration was clinically significant and resulted from

POAG. (Examples of clinically significant optic disc deterioration appear on the World Wide Web at [www.vrc-c.wustl.edu](http://www.vrc-c.wustl.edu).) Barely detectable changes in optic discs were not considered POAG endpoints in the OHTS. Participants classified as developing POAG continued to receive follow-up with regularly scheduled visits and tests. Observation participants who reached a POAG endpoint were prescribed medication. Medication participants who reached a POAG endpoint received increased glaucoma therapy, including argon laser trabeculoplasty and trabeculectomy, at the discretion of the treating clinician.

The Data and Safety Monitoring Committee met twice yearly to review the conduct of the trial, including the safety and efficacy of medication. The Committee approved all protocol changes.

## STATISTICAL ANALYSIS

The target sample size of 1500 participants (750 participants per group) was selected to provide 90% power to detect a 40% reduction in the 5-year incidence of POAG (15% incidence in the observation group and 9% incidence in the medication group) with a 2-sided error at  $\alpha = .05$ . The sample size allowed for a 15% loss to follow-up and a 10% cross-over between randomization groups. Because of the importance of glaucoma in the African American community, we set a goal of enrolling 400 African Americans among the 1500 participants. Recruitment was expected to take 24 months.

All comparisons of randomization groups were made on an intention-to-treat basis. For the purposes of the primary analysis, the number of days to the onset of POAG was determined by the date of the first abnormal finding that was subsequently confirmed and attributed to POAG. The primary hypothesis was tested using the Mantel-Haenszel log-rank test to compare the cumulative probability of developing POAG in each randomization group. Cox proportional hazards models were used to estimate hazard ratios for POAG, adjusting for the influence of baseline factors. Analyses were performed with SAS statistical software, version 8.1 (SAS Institute Inc, Cary, NC). *P* values were 2-tailed. To adjust for multiple interim tests of the primary hypothesis, we calculated symmetric O'Brien-Fleming sequential log-rank boundaries using the  $\alpha$ -spending function of Lan and DeMets.<sup>39,40</sup>

The Data and Safety Monitoring Committee approved the termination of the trial when the last randomized participant reached 5 years of follow-up, as specified in the original protocol. This article includes data through November 8, 2001.

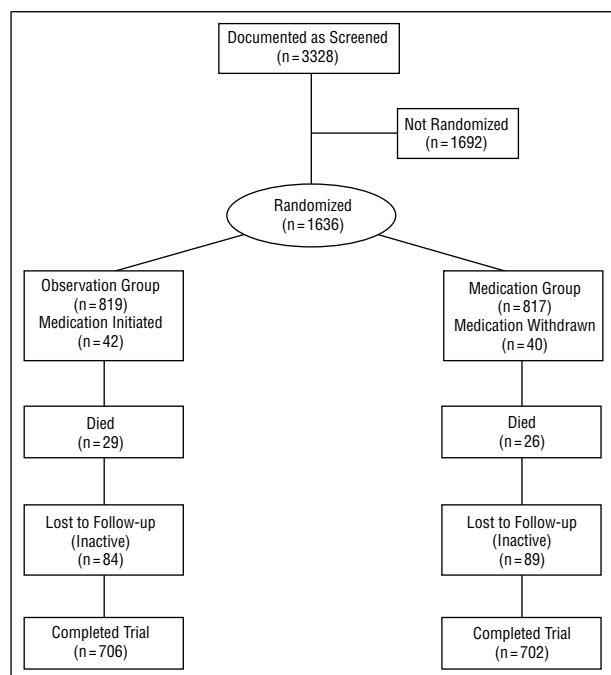
3328 individuals were considered for study enrollment, and 1636 individuals with documented informed consent were randomized as follows: 817 were assigned to receive topical ocular hypotensive medication, and 819 were assigned to observation. A total of 1692 people were not eligible for randomization for a variety of reasons including an IOP outside the specified range, abnormal or unreliable visual field test results, poor visual acuity, optic disc abnormalities, the inability to obtain clear photographs, and refusal to participate. A flowchart shows the progress of participants during the study (**Figure 1**).

No statistically significant differences in demographic or clinical factors were found between the 2 ran-

domized groups at baseline (for all comparisons,  $P > .05$ ) (**Table 1**). Additional details on the randomized participants were provided in a previously published article.<sup>33</sup>

## FOLLOW-UP

The median duration of follow-up was 72 months for African American participants and 78 months for other participants. Of the expected follow-up visits, 90% were completed during the study, and the visit completion rate did not differ by randomization group. The visit completion rate was 86.6% for African Americans and 91.4% for other participants ( $P < .001$ ). Technically acceptable



**Figure 1.** Flowchart of participant progress in the Ocular Hypertension Treatment Study (OHTS). The “not randomized” group includes individuals who were ineligible, refused, or were eligible but not randomized.

visual field test results and stereoscopic optic disc photographs were obtained at 99% and 96%, respectively, of the specified completed follow-up visits and did not differ by randomization group. The numbers of participants completing each follow-up visit are shown at the bottom of **Figure 2**.

#### ADHERENCE TO RANDOMIZATION

Forty participants in the medication group (4.9%) were withdrawn from medication or chose to stop medication for 6 months or more during the study. Fifteen of these individuals eventually resumed treatment. Forty-two participants in the observation group (5.1%) received topical ocular hypotensive medication for 6 months or more during the study. In most cases, treatment was initiated by the OHTS clinician because of concern about the participant’s high IOP. Three of these individuals eventually stopped treatment.

#### IOP REDUCTION AND MEDICATION

The baseline and follow-up IOP for the medication group and observation group are reported by race in **Table 2**. The distribution of IOP at baseline and follow-up for the medication and observation groups is shown in **Figure 2**. The IOP goal was met in both eyes at 87% (7515 of 8621) and in one eye at 7% (613 of 8621) of the scheduled follow-up visits completed by medication participants. **Figure 3** shows the percentage of participants who were prescribed each class of topical ocular hypotensive medication at each follow-up visit. At 60 months, 2 or more topical medications were prescribed for 39.7% (259 of 653) of the medication participants, and 3 or more medications were prescribed for 9.3% (61 of 653) of participants

in this group. At 60 months, 44.5% (65 of 146) of African American participants in the medication group were prescribed multiple medications, compared with 38.3% (194 of 507) of the other medication participants.

#### PRIMARY OPEN-ANGLE GLAUCOMA

**Table 3** reports the progress and outcome of randomized participants, unadjusted for follow-up time. In the medication group, 36 of the 817 randomized participants developed POAG compared with 89 of 819 randomized participants in the observation group. The first POAG endpoint for each participant is reported in **Table 4**. At 60 months, the cumulative probability of developing POAG was 4.4% in the medication group and 9.5% in the observation group. During the course of the entire study, the cumulative probability of developing POAG was significantly lower in the medication group compared with the observation group (hazard ratio, 0.40; 95% CI, 0.27-0.59; Mantel-Haenszel log-rank test;  $P < .0001$ ) (**Figure 4**). The estimate of the effect of treatment was not substantially altered after adjusting for baseline age, visual field pattern standard deviation, vertical cup-disc ratio, IOP, and corneal thickness, which was measured after randomization (hazard ratio, 0.34; 95% CI, 0.23-0.51). A treatment benefit was observed for reproducible visual field abnormality attributed to POAG (hazard ratio, 0.45; 95% CI, 0.27-0.76;  $P = .002$ ) and for reproducible optic disc deterioration attributed to POAG (hazard ratio, 0.36; 95% CI, 0.23-0.56;  $P < .0001$ ).

There was a trend for treatment to be less protective among self-identified African American participants (hazard ratio, 0.54; 95% CI, 0.28-1.03) compared with the other participants in the trial (hazard ratio, 0.34; 95% CI, 0.21-0.56), although this difference was not statistically significant ( $P = .26$ ). Primary open-angle glaucoma developed in 14 (6.9%) of 203 African American participants in the medication group and 26 (12.7%) of 205 African Americans in the observation group, compared with 22 (3.6%) of 614 other medication participants and 63 (10.2%) of 614 other observation participants.

A total of 218 participants (137 participants in the observation group and 81 participants in the medication group) developed reproducible visual field abnormality or reproducible optic disc deterioration due to POAG or a variety of other causes including trauma, stroke, branch retinal vein occlusion, macular degeneration, and testing artifact. The cumulative probability of developing a reproducible abnormality from any cause was statistically significantly lower in the medication group than in the observation group (hazard ratio, 0.58; 95% CI, 0.44-0.76;  $P = .00008$ ).

#### SAFETY

To ascertain the safety of treatment, the medication and observation groups were compared for participant self-report of symptoms (Glaucoma Symptom Scale and SF-36) and for medical and ocular history (new conditions, worsening of existing conditions, hospitalization, prolongation of hospitalization, or death) as collected by clinic staff during the course of the study. The following  $P$  values are unadjusted for multiple comparisons between



**Table 1. Baseline Characteristics by Randomization Group**

Characteristic	Medication (n = 817)	Observation (n = 819)	Overall (N = 1636)
Sex, No. (%)			
M	359 (43.9)	346 (42.2)	705 (43.1)
F	458 (56.1)	473 (57.8)	931 (56.9)
Age, No. (%), y			
40 to ≤50	291 (35.6)	287 (35.0)	578 (35.3)
>50 to ≤60	270 (33.0)	259 (31.6)	529 (32.3)
>60 to ≤70	202 (24.7)	210 (25.6)	412 (25.6)
>70 to 80	54 (6.6)	63 (7.7)	117 (7.2)
Race, No. (%)			
Native American	1 (0.1)	3 (0.4)	4 (0.2)
Asian	4 (0.5)	10 (1.2)	14 (0.9)
African American	203 (25.0)	205 (25.0)	408 (25.0)
Hispanic	24 (2.9)	35 (4.3)	59 (3.6)
White	577 (70.6)	560 (68.4)	1137 (69.5)
Other	8 (1.0)	6 (0.7)	14 (0.9)
Intraocular pressure, mean (SD), mm Hg	24.9 (2.6)	24.9 (2.7)	24.9 (2.7)
Horizontal cup-disc ratio, mean (SD)	0.36 (0.19)	0.36 (0.18)	0.36 (0.18)
Vertical cup-disc ratio, mean (SD)	0.39 (0.20)	0.39 (0.19)	0.39 (0.19)
Visual field mean deviation, mean (SD), dB	+0.27 (1.07)	+0.21 (1.03)	+0.24 (1.05)
Visual field pattern standard deviation, mean (SD), dB	1.92 (0.21)	1.90 (0.21)	1.91 (0.21)
Visual field corrected pattern standard deviation, mean (SD), dB	1.12 (0.34)	1.12 (0.36)	1.12 (0.35)
Central corneal thickness, mean (SD), $\mu\text{m}^*$	570.5 (38.9)	574.5 (37.7)	572.5 (38.4)
Previous use of ocular hypotensive medication, %	35.0	39.3	37.2
First-degree family history of glaucoma, %	34.0	35.6	34.8
Myopia $\geq 1$ -diopter spherical equivalent, %	34.4	33.7	34.1
Oral $\beta$ -adrenergic antagonist, %	5.4	4.6	5.0
Oral calcium channel blocker, %	12.8	14.0	13.4
History of migraine, %	10.4	11.7	11.1
History of diabetes, %	11.5	12.1	11.8
History of hypertension, %	37.5	38.1	37.8
History of low blood pressure, %	4.8	4.0	4.4
History of cardiovascular disease, %	5.8	6.5	6.1
History of stroke, %	0.9	1.6	1.2

\*For central corneal thickness, n = 699 for medication, n = 699 for observation, and n = 1398 overall. Measurements were conducted after 1999, about 2 years after randomization of the last participant.

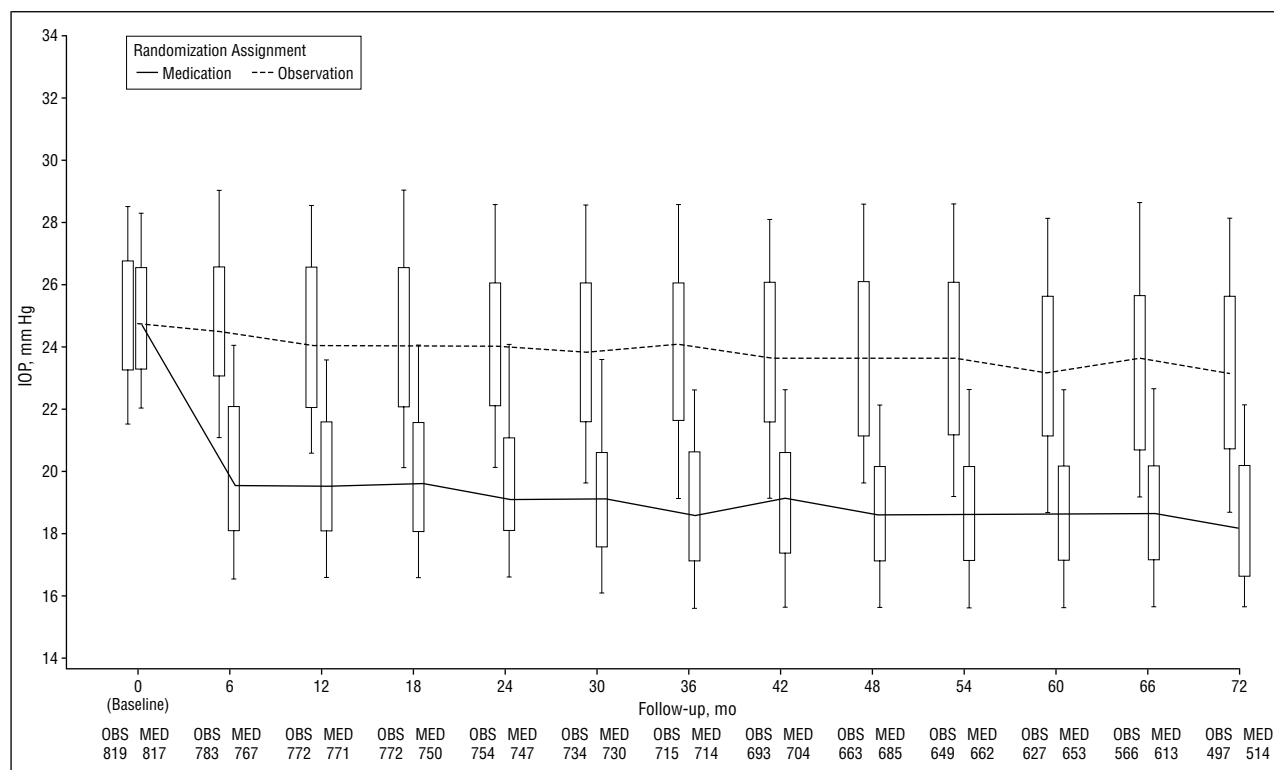
groups. In the self-administered surveys, there was no evidence that the medication group had increased ocular or systemic symptoms compared with the observation group (**Figure 5**). In the medical and ocular histories collected by clinic staff, a higher percentage of participants in the medication group, compared with the observation group, reported ocular symptoms (57% vs 47%;  $P < .001$ ) or symptoms affecting the skin, hair, or nails (23% vs 18%;  $P < .001$ ). The most common symptoms affecting the eyes were dryness, tearing, and itching. Changes in iris color, darkening of the eyelids, and growth of eyelashes occurred in 17% (65 of 380) of the medication participants who were prescribed a prostaglandin analogue for 6 months or longer, compared with 7.6% (48 of 631) of the participants in the observation group ( $P < .001$ ). There was no difference between randomization groups in total hospitalizations ( $P = .56$ ), worsening of preexisting conditions ( $P = .28$ ), or mortality rates ( $P = .70$ ). There was no difference between groups in visual acuity throughout the study ( $P > .05$  at all follow-up periods). There was a slight excess of cataract surgery in the medication group: 6.4% (52 of 806) of participants compared with 4.3% (35 of 813) of participants in the observation group ( $P = .06$ ).

Clinic staff recorded serious psychiatric adverse events in 1.5% (12 of 800) of the medication partici-

pants compared with 0.5% (4 of 802) of the observation participants ( $P = .05$ ). Clinicians judged none of the 12 serious psychiatric adverse events in the medication group to be “probably” or “definitely” related to the study medication. Clinic staff recorded serious genitourinary adverse events in 5.5% (44 of 800) of the medication participants compared with 3.4% (27 of 802) of the observation participants ( $P = .04$ ). Clinicians judged none of the 44 serious genitourinary adverse events in the medication group to be “probably” or “definitely” related to the study medication. These differences were not statistically significant when corrected for multiple comparisons. No differences between randomization groups were found in the rates of serious adverse events for the 11 other organ systems inventoried, including ocular events or those related to the skin, hair, or nails ( $P > .05$ ).

#### COMMENT

The OHTS has shown that topical ocular hypotensive medication is effective in reducing the incidence of glaucomatous visual field loss and/or optic nerve deterioration in individuals with elevated IOP between 24 mm Hg and 32 mm Hg. The mean  $\pm$  SD baseline IOP of all participants was  $24.9 \pm 2.7$  mm Hg with no difference be-



**Figure 2.** Distribution of intraocular pressure (IOP) at baseline and follow-up for the medication (MED) and observation (OBS) groups. The median IOP in each randomization group is joined by a line. The top and bottom of the boxes include the 75th and 25th percentiles, respectively, and the marks above and below include the 90th and 10th percentiles. Each participant's right and left eye was averaged to calculate a mean. The numbers of participants completing each follow-up visit are shown at the bottom.

**Table 2. Intraocular Pressure at Baseline and Follow-up in the Medication Group and Observation Group Reported by Race\***

	Medication Group			Observation Group		
	African American (n = 203)	Other (n = 614)	All (n = 817)	African American (n = 205)	Other (n = 614)	All (n = 819)
IOP at baseline	25.1 ± 2.9	24.9 ± 2.6	24.9 ± 2.6	25.1 ± 2.8	24.9 ± 2.7	24.9 ± 2.7
IOP averaged across scheduled follow-up visits	19.3 ± 2.3	19.3 ± 2.1	19.3 ± 2.2	23.9 ± 3.2	23.9 ± 2.8	23.9 ± 2.9
Reduction from baseline, %	-22.9 ± 9.9	-22.4 ± 9.9	-22.5 ± 9.9	-4.7 ± 12.8	-3.8 ± 11.1	-4.0 ± 11.6

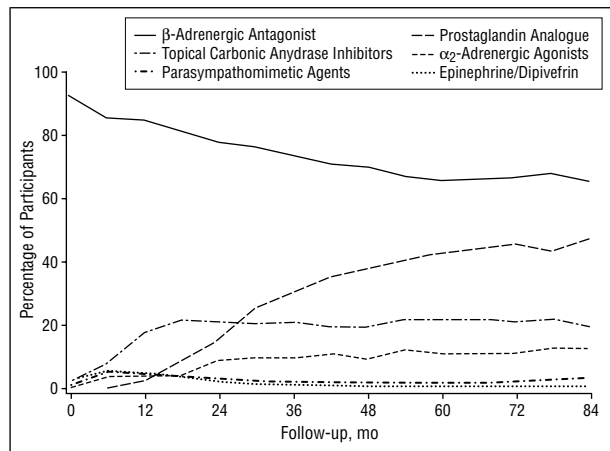
\*Intraocular pressure measurements (in millimeters of mercury) are excluded after the date participants developed primary open-angle glaucoma. Data are presented as mean ± SD. IOP indicates intraocular pressure; sample size, number of randomized participants.

tween randomization groups. Individuals were randomized either to observation or to receive topical ocular hypotensive medication. The goal of treatment was to reduce the IOP by 20% or more and to reach an IOP of 24 mm Hg or less. In the medication group, the mean ± SD reduction in IOP during the follow-up period was 22.5% ± 9.9%. The IOP declined by 4.0% ± 11.6% in the observation group. Randomization groups had similar baseline demographic and clinical characteristics as well as similar rates of visit completion and outcome ascertainment throughout follow-up. The rate of adherence to randomization assignment was high and did not differ by group.

To our knowledge, the OHTS is the largest randomized trial to date of the safety and efficacy of ocular hypotensive medication in delaying or preventing the onset of POAG in individuals with ocular hypertension. At 60 months, the cumulative probability of developing

POAG was 4.4% in the medication group and 9.5% in the observation group. It is difficult to compare the incidence of POAG in this study with that in many previous publications because the incidence rate reflects both study-specific eligibility criteria and endpoint criteria. The OHTS used strict entry criteria and included generally healthy volunteers. In addition, stringent endpoint criteria included only reproducible visual field abnormality and optic disc deterioration attributable to POAG. The OHTS used quality control criteria for certifying and monitoring visual field technicians and photographers.

Criteria for POAG were made more stringent during the course of the study. The number of consecutive abnormal visual field test results required to confirm an abnormality was increased from 2 to 3. In addition, the criterion for optic disc deterioration was increased from a "barely detectable difference" to a "clinically significant change" in the optic disc neuroretinal rim.



**Figure 3.** Percentage of medication participants prescribed each class of medication at each follow-up visit. Percentages sum to greater than 100% because more than 1 class of medication may be prescribed. Combination drugs are counted twice.

**Table 3. Progress and Outcome of Study Participants\***

	Medication, No. (%)	Observation, No. (%)	Overall, No. (%)
Randomized	817 (100.0)	819 (100.0)	1636 (100.0)
Died	26 (3.2)	29 (3.5)	55 (3.4)
Inactive†	89 (10.9)	84 (10.2)	173 (10.6)
Nonadherence to randomization‡	40 (4.9)	42 (5.1)	82 (5.0)
Developed reproducible visual field abnormality or optic disc deterioration due to any cause	81 (9.9)	137 (16.7)	218 (13.3)
Developed reproducible visual field abnormality or optic disc deterioration due to POAG	36 (4.4)	89 (10.9)	125 (7.6)

\*POAG indicates primary open-angle glaucoma.

†Inactive status refers to participants who missed their last 2 follow-up visits but did not die or reach the POAG endpoint.

‡Nonadherence to randomization refers to participants randomized to medication who were withdrawn from medication for 6 months or more and to participants randomized to observation who were prescribed topical hypotensive medication for 6 months or more prior to reaching the POAG endpoint.

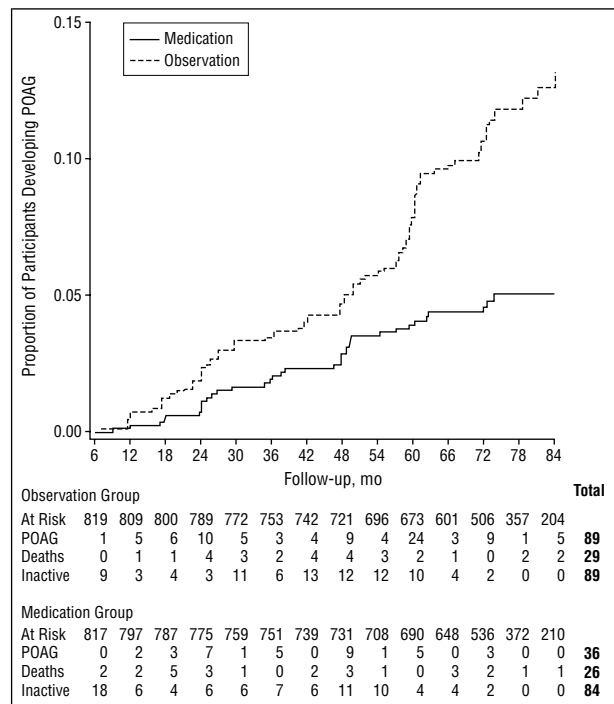
Because glaucoma is the leading cause of blindness in African Americans, recruitment was extended to ensure that 25% of the sample was of African American origin. Although there was a trend for the treatment benefit to be lower in African Americans than for other participants, the median follow-up time for African American participants was 6 months shorter. It is therefore possible that the treatment response would be more similar with additional follow-up, particularly because the baseline and follow-up IOP in the observation and medication groups did not differ by race.

Topical ocular hypotensive medication reduced the incidence of both glaucomatous visual field abnormality and optic disc deterioration. Approximately 55% (69 of 125) of the initial POAG endpoints involved optic disc deterioration in the absence of visual field abnormalities meeting study criteria for a visual field endpoint. With longer follow-up, we will be able to report how many of

**Table 4. First POAG Endpoint for Each Participant\***

	Medication Group, No. (%)	Observation Group, No. (%)
Visual field	15 (41.7)	29 (32.6)
Optic disc	18 (50.0)	51 (57.3)
Concurrent visual field and optic disc	3 (8.3)	9 (10.1)
<b>Total</b>	<b>36 (100.0)</b>	<b>89 (100.0)</b>

\*POAG indicates primary open-angle glaucoma. Other POAG endpoints may have occurred in these eyes or the other eyes at a later time.

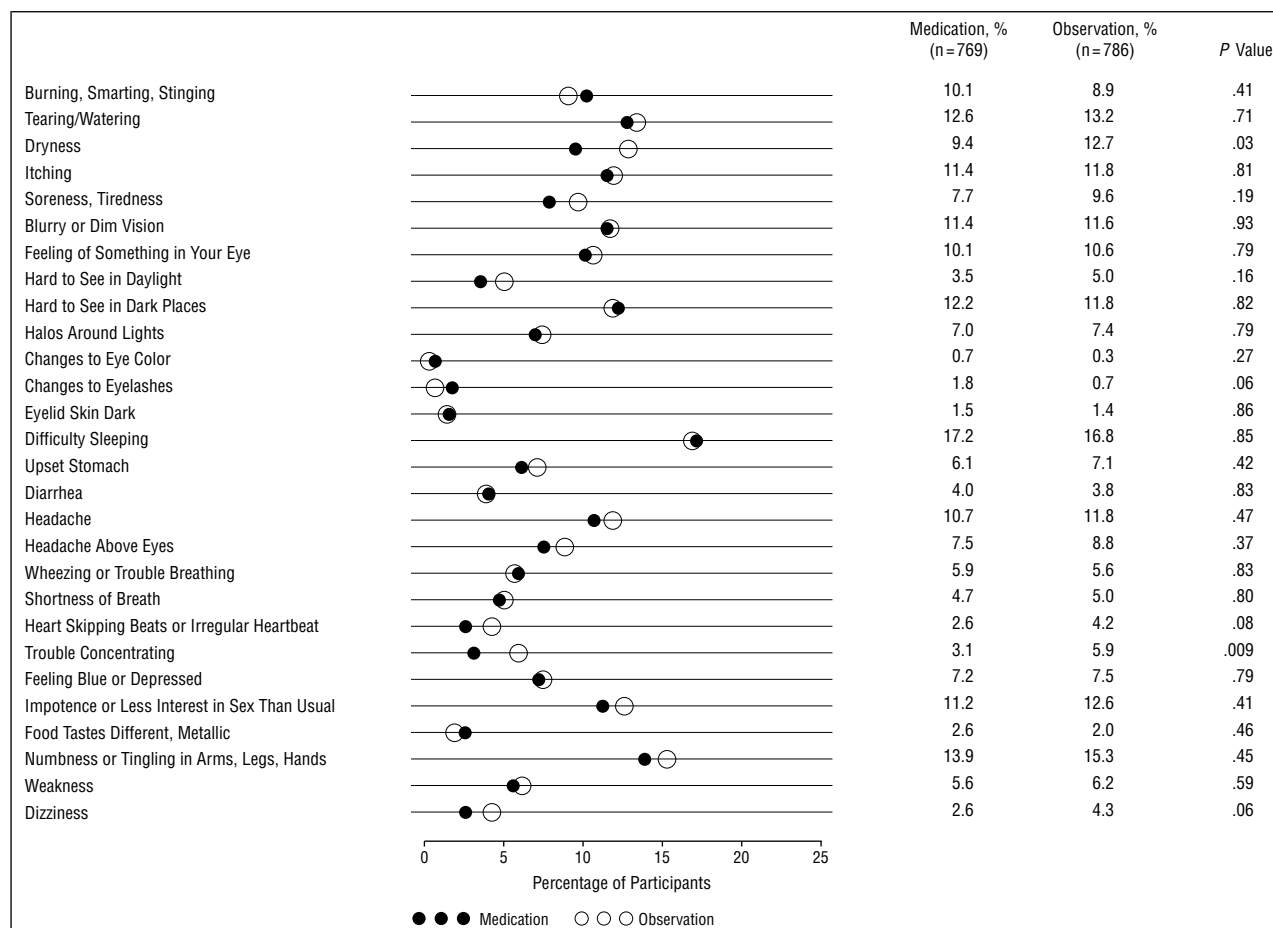


**Figure 4.** Kaplan-Meier plot of the cumulative probability of developing primary open-angle glaucoma (POAG) by randomization group. The number of participants at risk are those who had not developed POAG at the beginning of each 6-month period. The number of participants classified as developing POAG is given for each interval. Participants who did not develop POAG and withdrew before the end of the study or who died are censored from the interval of their last completed visit.

the individuals with optic disc deterioration eventually develop visual field loss.

Previous randomized trials on the efficacy of ocular hypotensive medication in delaying or preventing the onset of POAG were divided between those that demonstrated a treatment benefit<sup>25-29</sup> and those that did not.<sup>19-24,30</sup> However, many of these trials had relatively small sample sizes, short follow-up, and a less sensitive assessment of visual fields. Most previous trials did not evaluate structural changes in the optic disc as a glaucoma outcome. In addition, most trials used only 1 drug, so treatment efficacy was reduced by drug-specific nonresponsiveness and medication intolerance.

The OHTS demonstrated that moderate IOP reductions could be attained and maintained during a median follow-up period of 72 months. The treatment target was an IOP of 24 mm Hg or less and a 20% reduction from the average of the qualifying and baseline IOP, but not



**Figure 5.** Percentage of participants in the medication group and observation group who rated that they were bothered “a lot” by ocular or systemic symptoms at 1 or more follow-up visits.

necessarily a reduction to less than 18 mm Hg. These treatment objectives reflect common clinical practice, but no assumption was made that these IOP levels were ideal for each participant. During the course of the trial, 87% of the medication participants achieved this IOP target reduction in both eyes, and an additional 7% did so in one eye. The use of all commercially available topical ocular hypotensive medications prescribed singly or in combination allowed a high proportion of participants to reach their IOP target.

We monitored the safety of treatment through diverse sources of information. Throughout the study, there was no evidence of excess risk in the medication group for participant-reported symptoms according to the Glaucoma Symptom Scale or SF-36. The medication group had a similar mean visual acuity to the observation group throughout the study. There was no evidence of excess risk in the medication group for the overall number of new medical conditions, worsening of preexisting conditions, hospitalizations, or mortality. We noted a possible excess of serious psychiatric and genitourinary adverse events and cataract surgery in the medication participants. It is unclear whether these few differences are real or a chance occurrence resulting from the large number of comparisons made between the randomization groups. Although the differences between randomization groups were not statistically significant after cor-

recting for multiple comparisons, these findings warrant further study. The use of ocular hypotensive medication may cause more adverse effects in routine practice than reported in this article because the OHTS sample consists of relatively healthy volunteers, with a mean age younger than 60 years, who may be less susceptible to the adverse effects of topical hypotensive medication. The safety experience reported in the OHTS implies the safety of the treatment protocol, not of particular medications. The recent availability of many different types of ocular hypotensive medications should allow clinicians to choose a safe regimen for most patients.

The results of the OHTS do not imply that all individuals with elevated IOP should be treated with ocular hypotensive medication. The decision to recommend treatment should involve many factors, such as (1) the low overall incidence of POAG among individuals with ocular hypertension in population-based studies and this study; (2) the burden of long-term treatment, including possible adverse effects, cost, and inconvenience; (3) the individual's risk of developing POAG; (4) the individual's likelihood of being helped by treatment; and (5) the individual's health status and life expectancy. In our companion article,<sup>41</sup> we report baseline factors that predict which participants in the OHTS developed POAG. These factors may be useful to a clinician caring for a patient with ocular hypertension.



**in the Ocular Hypertension Treatment Study**

The following participants were certified on or before November 11, 2001. Principal investigators are listed in italics. Names marked with an asterisk are no longer part of the study.

**Clinical Centers**

**Bascom Palmer Eye Institute, University of Miami, Miami, Fla**

**Investigators:** *Donald L. Budenz, MD*; Francisco E. Fantes, MD; Steven J. Gedde, MD; Richard K. Parrish II, MD. **Coordinators and Staff:** Madeline L. Del Calvo, BS; James R. Davis\*; Elena Ferrer.\*

**Eye Consultants of Atlanta (formerly M. Angela Vela, MD, PC), Atlanta, Ga**

**Investigators:** *Thomas S. Harbin, Jr, MD*; Paul McManus, MD; Charles J. Patorgis, OD; Ron Tilford, MD\*; M. Angela Vela, MD\*; Randall R. Ozment, MD.\* **Coordinators and Staff:** Laura Brannon, COMT; Montana L. Hooper, COT; Stacey S. Goldstein, COMT; June M. LaSalle Gartlir, COA; Debbie L. Lee, COT; Michelle D. Mondschein; Marianne L. Perry, COT; Julie M. Wright, COT; Linda Butler, COT\*; Carla F. Crissey\*; Mary Pat Hubert\*; Marsha B. Liner\*; Teresa Long, COT\*; Alma Newkirk\*; Emily J. Reese, COA\*; Shelly R. Smith, COA\*; Ramona Weeden.\*

**Cullen Eye Institute, Baylor College of Medicine, Houston, Tex**

**Investigators:** *Ronald L. Gross, MD*; Silvia Orengo-Nania, MD. **Coordinators and Staff:** Pamela M. Frady, COMT, CCRC; Benita D. Slight, COT, EMT-P, CCRP; Sandy A. Ellis, COA.\*

**Devers Eye Institute, Portland, Ore**

**Investigators:** *George A. (Jack) Cioffi, MD*; Elizabeth Donohue, MD; Steven Mansberger, MD; E. Michael Van Buskirk, MD; Julia Whiteside-Michel, MD.\* **Coordinators and Staff:** Kathryn Sherman; JoAnne M. Fraser, COT; Linda Diehl Boly, RN\*; Vanora Volk.\*

**Emory University Eye Center, Atlanta, Ga**

**Investigators:** *Allen D. Beck, MD*; Anastasias Costarides, MD, PhD; Reay H. Brown, MD\*; Mary Lynch, MD\*; John Rieser, MD.\* **Coordinators and Staff:** Donna Leef, MMSc, COMT; Jatinder Bansal, COT\*; David Jones, COT\*; Lillie Reyes, COT.\*

**Henry Ford Medical Center, Detroit, Mich**

**Investigators:** *G. Robert Lesser, MD*; Deborah Darnley-Fisch, MD; Nauman R. Imami, MD; James Klein, MD\*; Talya Kupin, MD\*; Rhett Schiffman, MD.\* **Coordinators and Staff:** Melanie Gutkowski, COMT, CO; Jim Bryant, COT; Ingrid Crystal Fugmann, COMT; Monica R. Gibson, COT; Wendy Gilroy, COMT; Monica Lacoursiere; Sue Loomis, COT; Lauren S. Turner; Amanda Cole-Brown\*; Amy Draghiceanu, COMT\*; Jeannine M. Gartner\*; Norma Hollins, COT, RN\*; Melina Mazurk, COT\*; Colleen Wojtala.\*

**Johns Hopkins University School of Medicine, Baltimore, Md**

**Investigators:** *Donald J. Zack, MD, PhD*; Donald A. Abrams, MD; Nathan G. Congdon, MD, MPH; Robert A. Copeland, MD; David S. Friedman, MD, MPH; Ramzi Hemady, MD; Eve J. Higginbotham, MD; Henry D. Jampel, MD, MHS; Irvin P. Pollack, MD; Harry A. Quigley, MD; Alan L. Robin, MD; Agnes S. Huang, MD\*; Omofolasade B. Kosoko, MD, MSPH\*; Scott LaBorwit, MD\*; Stuart J. McKinnon, MD, PhD\*; Sreedhar V. Potarazu, MD\*; Scott Drew Smith, MD\*; Nancy E. Williams, MD. **Coordinators and Staff:** Rachel Scott, BS, COA; Rani Kalsi; Felicia Keel, COT; Lisa Levin; Robyn Priest-Reed, MMSc; Mary Ellen Flaks\*; Kathy A. Hoffman\*; Claudia Johns\*; Nicole K. Laviniere\*; Patricia Zwaska.\*

**Charles R. Drew University, Jules Stein Eye Institute, University of California, Los Angeles**

**Investigators:** *Anne L. Coleman, MD, PhD*; Richard S. Baker, MD; Michelle C. Banks, MD; Y. P. Dang, MD; Simon K. Law, MD; Dana P. Tannenbaum, MD; Baber H. Ali, MD\*; Luca O. Brigatti, MD\*; Mary R. Chang, MD\*; Hyong S. Choe, MD\*; Nichola X. Hamush, MD\*; Ricky S. Huo, MD\*; Leonidas A. Johnson, OD\*; Michael S. Kook, MD\*; Francis A. La Rosa, MD\*; Hung H. Le, MD\*; David A. Lee, MD\*; John C. Marsh, MD\*; Mamdouh L. Nakla, MD\*; Irene Fong Sasaki, MD\*; Robert K. Stevens, MD\*; M. Roy Wilson, MD.\* **Coordinators and Staff:** Jackie R. Sanguinet, BS, COT; Bobbie Ballenberg, COMT; Salvador Murillo; Manju Sharma; Rodolfo X. Garcia\*; Rebecca A. Rudenko.\*

**W. K. Kellogg Eye Center, Ann Arbor, Mich**

**Investigators:** *Terry J. Bergstrom, MD*; Sayoko E. Moroi, MD, PhD; Andrew N. Bainnson, MD\*; Bruce D. Cameron, MD\*; Maria S. Gottfreds, MD\*; Pam R. Henderson, MD\*; Eve J. Higginbotham, MD\*; A. Tim Johnson, MD\*; Kurt K. Lark, MD\*; Mariannette Miller-Meeks, MD\*; Robert M. Schertzer, MD.\* **Coordinators and Staff:** Carol J. Pollack-Rundle, BS, COMT; Michelle A. Tehranisa, COT.

**Kresge Eye Institute, Wayne State University, Detroit**

**Investigators:** *Bret A. Hughes, MD*; Monica Y. Allen, MD; Mark S. Juzych, MD; Mark L. McDermott, MD; John M. O'Grady, MD; John M. Ramocki, MD; Dian Shi, MD; Dong H. Shin, MD, PhD; Robert V. Finlay, OD\*; Stephen Y. Reed, MD.\* **Coordinators and Staff:** Juan Allen; Laura L. Schulz, CNA; Linda A. Van Conett, COT; Mary B. Hall; Beverly McCarty, LPN\*; Chris R. Foster.\*

(continued)

For years, ophthalmologists and health policy experts have discussed the lack of data on whether lowering the IOP is useful in POAG.<sup>17,31</sup> The OHTS provides clear proof of the benefit of lowering the IOP. Taken with

results from the Normal-Tension Glaucoma Study<sup>42</sup> and the Advanced Glaucoma Intervention Study,<sup>43</sup> there is now strong evidence that lowering the IOP preserves vision in POAG.

**in the Ocular Hypertension Treatment Study (cont)**

**University of Louisville, Louisville, Ky**

**Investigators:** Joern B. Soltan, MD; Gustavo E. Gamero, MD; Judit Mohay, MD; Gökhan Özdemir, MD; Robb R. Shrader, MD; Richard M. Fenton, MD\*; Robert D. Fechtner, MD\*; Nicholas Karunaratne, MD\*; Albert S. Khoury, MD\*; Mahnud A. Naser, MD\*; Tony Realini, MD\*; Jianming Ren, MD\*; Michelle Robison, MD\*; George V. Shafranov, MD\*; Gilbert Sussman, MD\*; Mike Roy Willman, MD\*; Thomas W. Uihlein, MD\*; Thom J. Zimmerman, MD, PhD.\* **Coordinators and Staff:** Sandy Lear, RN; Kathleen Coons, COT; Jane H. Fenton, COT\*; Nancy Mahoney\*; Linda Upton, COA.\*

**Mayo Clinic/Foundation, Rochester, Minn**

**Investigators:** David C. Herman, MD; Douglas H. Johnson, MD; Paul H. Kalina, MD; Matthew Hattenhauer, MD\*; Erik O. Schoff, MD.\* **Coordinators and Staff:** Becky A. Nielsen, LPN; Nancy J. Tvedt.

**New York Eye & Ear Infirmary, New York**

**Investigators:** Jeffrey M. Liebmann, MD; Robert Ritch, MD; Celso A. Tello, MD; Ronald M. Caronia, MD\*; David S. Greenfield, MD\*; Alyson L. Hall, MD\*; Elisa N. Morinelli, MD\*; Robert F. Rothman, MD.\* **Coordinators and Staff:** Jean L. Walker, BS, COA; Deborah L. Simon, COA; Kim A. Barget\*; Debra Beck, BA, COA\*; Jean E. Denaro, MA\*; E. Eugenie Hartmann, PhD\*; Anna A. Norris\*; Melissa X. Perez\*; David A. Steinberger.\*

**Ohio State University, Columbus**

**Investigators:** Paul Weber, MD; N. Douglas Baker, MD; Robert J. Derick, MD; David Lehmann, MD; Omar Mobin-Uddin, MD. **Coordinators and Staff:** Kathyne McKinney, COMT; Cynthia Hutchinson; Diane Moore, COA; Cynthia A. Williams; Lori Black, COA\*; Becky Gloeckner, COT\*; Crystal Y. Hendrix Coleman, COT\*; Tammy Lauderbaugh\*; Billie J. Romans.\*

**Pennsylvania College of Optometry/MCP Hahnemann University School of Medicine, Philadelphia**

**Investigators:** G. Richard Bennett, MS, OD; Elliot Werner, MD; Myron Yanoff, MD; Sara Foster, OD.\* **Coordinators and Staff:** Lindsay C. Bennett, BA; Mary Jameson, Opt, TR; Maria Massini\*; Kim M. Yoakum, BS.\*

**Scheie Eye Institute, University of Pennsylvania, Philadelphia**

**Investigators:** Jody R. Piltz-Seymour, MD; Teresa L. Brevetti, MD; Donald L. Budenz, MD\*; Jeff A. Gordon, MD\*; Madhu S. Gorla, MD\*; Oneca Heath-Phillip, MD\*; Lydia Matkovich, MD\*; Frank S. Parisi, MD\*; Michelle R. Piccone, MD\*; Anna Purna Singh, MD\*; Rebecca S. Walker, MD.\* **Coordinators and Staff:** Jane L. Anderson, MS, CCRC; Cheryl McGill, COA; Janice T. Petner, COA; Debbie D. Curry\*; Diane L. McDonald, COT\*; Bonnie L. Stintzman.\*

**University of California–Davis, Sacramento**

**Investigators:** James D. Brandt, MD; Jeffrey J. Casper, MD; John T. Dragicevich, MD; Thomas R. Johansen, MD; Esther S. Kim, MD; Michele C. Lim, MD; Michael B. Mizoguchi, MD; Alan M. Roth, MD; Ivan R. Schwab, MD; Richard Bernheimer, MD\*; Marcia V. Beveridge, MD\*; Craig Bindi, MD\*; Marina Chechelnitsky, MD\*; Janet K. Han, MD\*; Edward V. Hernandez, MD\*; Andrea V. Gray, MD\*; Denise Kayser, MD\*; Soohyung Kim, MD\*; Richard L. Nguyen\*; Loan Tran, MD.\* **Coordinators and Staff:** Ingrid J. Clark, COA; Vachiraporn X. Jaicheun, COA\*; Denise M. Owensby, BS, COA; Marilyn A. Sponzo, COA.

**University of California–San Diego, La Jolla**

**Investigators:** Robert N. Weinreb, MD; J. Rigby Slight, MD. **Coordinators and Staff:** Eva Kroneker, COA; Barbara Brunet\*; Maritza K. Antunez\*; Dawn Frasier, COT\*; Rivak Hoffman, COT\*; Kimberly Kebabjian\*; Jennifer Kraker\*; Marina Madrid\*; Julia M. Williams.\*

**University of California–San Francisco**

**Investigators:** Michael V. Drake, MD; Allan J. Flach, MD; Robert Stamper, MD. **Coordinators and Staff:** Fermin P. Balles-teros, Jr; Marjan Karimabadi; Valerie Margol; Peggy Yamada, COT; Lou Anne Aber, COA\*; Ilya Saltykov.\*

**University Suburban Health Center, South Euclid, Ohio**

**Investigators:** Kathleen A. Lamping, MD; Gregory A. Eippert, MD; Beverly C. Forcier, MD\*; Laurence D. Kaye, MD.\* **Coordinators and Staff:** Angela K. McKean; Bettina J. Modica; Tonya Sims; Susan Van Huss\*; Cheryl L. Vitelli; Laura Brevard\*; Sheri Burkett Porter, COA\*; Elizabeth Laux\*; Carla R. DeLaRosa Valenti\*; Dina DeLisio\*; Kimberly Purkey.\*

**Washington OHTS Center, Washington DC**

**Investigators:** Douglas E. Gaasterland, MD; Frank S. Ashburn, MD; Arthur L. Schwartz, MD; Howard S. Weiss, MD; Sherri L. Berman, MD\*; Alice T. Gasch, MD\*; Jane Hughes, MD\*; John D. Mitchell, MD\*; Guy S. Mullin, MD\*; Pedro M. Rivera, MD\*; Soo Y. Shin, MD\*; Thomas H. Yau, MD.\* **Coordinators and Staff:** Robin L. Montgomery, COA; Donna M. Claggert; Karen D. Schacht, COT; Anne M. Bocckl, MS; Ellen T. Coyle, COMT\*; Christopher T. Garvin, COA\*; Jennifer A. Gloor\*; Melissa M. Kellogg, COA\*; Jocelyn Kotey\*; Diane Latham\*; Vikki L. Monks\*; Suzanne M. Flavnieks, COT\*; Dina E. Rothlin\*; Lynne S. Vayer, BS, COT\*; Cindy V. Witol, CO\*; Jing Cheng Zhao.\*

(continued)

Submitted for publication March 6, 2002; final revision received, not applicable; accepted April 10, 2002.

From the Department of Ophthalmology and Visual Sciences (Drs Kass and Gordon) and the Division of Biostatistics (Mr Miller), Washington University School of Medi-

cine, St Louis, Mo; Department of Ophthalmology, Medical College of Wisconsin, Milwaukee (Dr Heuer); Maryland Center for Eye Care Associates and the Department of Ophthalmology, University of Maryland, Baltimore (Dr Higginbotham); Devers Eye Institute, Portland Ore (Dr Johnson);

**in the Ocular Hypertension Treatment Study (cont)**

**Washington University School of Medicine, St Louis, Mo**

**Investigators:** *Martin B. Wax, MD*; Edward M. Barnett, MD; Bernard Becker, MD; Michael A. Kass, MD; Allan E. Kolker, MD; Carla J. Siegfried, MD; Regina M. Smolyak, MD; Dipali V. Apte, MD\*; David C. Ball, MD\*; John C. Burchfield, MD\*; Deepak P. Edward, MD\*; Rebecca S. Heaps, MD\*; Pierre G. Mardelli, MD\*; J. Eric Pepperl, MD\*; Jonathan Silbert, MD\*; Marshall W. Stafford, MD\*; Paul M. Tesser, MD\*; James W. Umlas, MD.\* **Coordinators and Staff:** Arnold D. Jones, COA; Lori A. Clark, COT\*; Fortunata Darmody, COT\*; Diana L. Moellering, COT.

**Committees**

**Executive/Steering Committee:** Ingrid Adamsons, MD (nonvoting); Douglas R. Anderson, MD; James D. Brandt, MD; Anne L. Coleman, MD, PhD; Michael Drake, MD; Donald F. Everett, MA; Robert Fechtner, MD\*; Douglas Gaasterland, MD; Mae O. Gordon, PhD; Dale K. Heuer, MD; Eve J. Higginbotham, MD; Chris A. Johnson, PhD; Michael A. Kass, MD (chair); John L. Keltner, MD; Richard K. Parrish II, MD; Jody R. Piltz-Seymour, MD; M. Roy Wilson, MD; Arthur Shedden, MD\* (nonvoting); Roger Vogel, MD\* (nonvoting); Jane L. Anderson, MS, CCRC; Debra Beck, BA, COA\*; Ingrid Clark, COA\*; Donna Leef, MMSc, COMT\*; Patricia A. Morris (nonvoting); Carol J. Pollack-Rundle, COMT; Ann K. Wilder, RN, BSN (nonvoting).

**Data and Safety Monitoring Committee:** Ingrid Adamsons, MD (nonvoting; open session); Roy Beck, MD, PhD; John Connnett, PhD; Claude Cowan, MD; Barry Davis, MD, PhD (chair); Donald F. Everett, MA (nonvoting); Mae O. Gordon, PhD (nonvoting); Michael A. Kass, MD (nonvoting; open session, 11/4/93 to 4/30/98; closed session, 5/1/98 to present); Ronald Munson, PhD; Mark Sherwood, MD; Gregory L. Skuta, MD; Keven O'Rourke, OP, JCL, STEM.\*

**Endpoint Committee:** Dale K. Heuer, MD; Eve J. Higginbotham, MD; Richard K. Parrish II, MD; Mae O. Gordon, PhD.

**Resource Centers**

**Coordinating Center: Washington University School of Medicine, St Louis**

**Investigators:** *Mae O. Gordon, PhD*; J. Philip Miller, AB; Kenneth Schechtman, PhD.\* **Coordinators and Staff:** Joel Achtenberg, MSW; Mary Bednarski, MAS; Julia Beiser, MS; Karen Clark, BS; Christopher Ewing, BA; Elizabeth Hornbeck, BS; Ellen Long, CCRA; Carolyn R. Miles, MA; Patricia Morris; Denise Morrison; Ann K. Wilder, RN, BSN, CCRP.

**Chairman's Office: Washington University School of Medicine, St Louis**

**Investigator:** *Michael A. Kass, MD*. **Coordinators and Staff:** Deborah Dunn; Debra Browning\*; Dawn Tourville.\*

**Project Office: National Eye Institute, Rockville, Md**

Donald F. Everett, MA; Richard Mowery, PhD.\*

**Optic Disc Reading Center: Bascom Palmer Eye Institute, University of Miami, Miami, Fla**

**Investigators:** *Richard K. Parrish II, MD*; Douglas R. Anderson, MD; Donald L. Budenz, MD. **Coordinators and Staff:** Maria-Cristina Wells-Albornoz, MPH; William Feuer, MS; Ditte Hess, CRA; Heather Johnson; Joyce Schiffman, MS; Ruth Vandembroucke.

**Visual Field Reading Centers: University of California–Davis, Sacramento; Discoveries in Sight, Devers Eye Institute, Portland, Ore**

**Investigators:** *John L. Keltner, MD* (Sacramento); Chris A. Johnson, PhD (Portland). **Coordinators and Staff:** Kimberly E. Cello, BS; Shannan E. Banderma, MA; Bhupinder S. Dhillon, BS; Daniel Redline, BS; David Claunch\*; Mary A. Edwards, BS\*; Peter Gunther\*; Jacqueline Quigg\*; John Spurr.\*

**Ancillary Study Reading Centers**

**Confocal Scanning Laser Ophthalmoscopy Reading Center: University of California–San Diego, La Jolla**

**Investigators:** *Robert N. Weinreb, MD*; Linda Zangwill, PhD. **Coordinators and Staff:** Keri Dirkes, MPH; Amanda R. Smith, BS.

**Short Wavelength Automated Perimetry Reading Center: Devers Eye Institute, Legacy Portland Hospitals, Portland, Ore**

**Investigator:** *Chris A. Johnson, PhD*. **Coordinator:** Erna Hibbitts.

**Corneal Endothelial Cell Density Reading Center: Mayo Clinic/Foundation, Rochester, Minn**

**Investigator:** *William M. Bourne, MD*. **Coordinators and Staff:** Becky A. Nielsen, LPN; Thomas P. Link, CRA, BA; Jay A. Rostvold.

*Department of Ophthalmology, University of California, Davis (Dr Keltner); Bascom Palmer Eye Institute, University of Miami School of Medicine, Miami, Fla (Dr Parrish); and Creighton University School of Medicine, Omaha, Neb (Dr Wilson).*

*This study was supported by grants EY09341 and EY09307 from the National Eye Institute and the National Center on Minority Health and Health Disparities, National Institutes of Health, Bethesda, Md; Merck Research*

*Laboratories, White House Station, NJ; and by an unrestricted grant from Research to Prevent Blindness, New York, NY.*

*Drugs were donated by the following pharmaceutical companies: Alcon Laboratories Inc, Fort Worth, Tex; Allergan Therapeutics Group, Irvine, Calif; Bausch & Lomb Pharmaceutical Division, Tampa, Fla; CIBA Vision Corporation, Duluth, Ga; Merck Research Laboratories; Novartis Ophthalmics Inc, Duluth; Otsuka America Phar-*

## Financial Disclosures

The following investigators have disclosed a proprietary or financial interest in companies providing medications and/or equipment to the Ocular Hypertension Treatment Study. This information is for 2000-2001, the most current reporting period.

Ingrid Adamsons, MD: Merck, full-time employee. Frank Ashburn, MD: Merck, stock. Roy Beck, MD: Allergan, consultant. Terry Bergstrom, MD: Merck, stock. James D. Brandt, MD: Merck, study principal investigator, honoraria; Allergan, study principal investigator, honoraria. G. A. Cioffi, MD: Alcon, grant support, honoraria; Merck, honoraria; Bausch and Lomb, honoraria; CIBA Vision, honoraria, consultant; Allergan, consultant, grant support, honoraria; Otsuka American Pharmaceutical, grant support; Pharmacia/Upjohn, consultant, grant support, honoraria. Anne Coleman, MD: Merck, stock, honoraria. Anastasios Costarides, MD: Merck, stock; Medi-Pro, consultant. Barry Davis, MD, PhD: Merck, consultant; Pharmacia/Upjohn, consultant. Ronald Gross, MD: Alcon, consultant, grant support, speakers bureau; Allergan, consultant, grant support, speakers bureau; Novartis, grant support, speakers bureau. Dale Heuer, MD: Merck, honoraria, consultant; Pharmacia, honoraria, consultant; Allergan, grant support. Eve Higginbotham, MD: Pharmacia/Upjohn, honoraria; CIBA Vision, consultant; Merck, grant support, honoraria. Nauman Imami, MD: Merck, honoraria; Pharmacia, speakers bureau. Chris Johnson, MD: Humphrey Systems, consultant, grant support; Allergan, consultant; Merck, honoraria; Pharmacia, honoraria. Douglas Johnson, MD: Allergan, grant support. Paul Kalina, MD: Merck, stock. Michael Kass, MD: Merck, consultant; Pharmacia, consultant; Allergan, grant support. John Keltner, MD: Merck, stock. Jody Piltz-Seymour, MD: Merck, consultant; Allergan, grant support. Alan Robin, MD: Alcon, consultant; Pharmacia/Upjohn, honoraria; Humphrey Zeiss, consultant. Arthur Schwartz, MD: Merck, stock; Allergan, consultant; Alcon, consultant; Pharmacia, consultant. Mark Sherwood, MD: Allergan, consultant; CIBA Vision, consultant; Merck, consultant; Pharmacia/Upjohn, consultant. Gregory Skuta, MD: Pharmacia/Upjohn, consultant; Allergan, honoraria; Pharmacia/Upjohn, honoraria. Robert L. Stamper, MD: Allergan, consultant, speakers bureau; Pharmacia, speakers bureau; Alcon, speakers bureau; Merck, speakers bureau. Martin Wax, MD: Pharmacia, consultant. Paul Weber, MD: Merck, stock. Robert N. Weinreb, MD: Allergan, consultant, grant support; Merck, stock, consultant, grant support; Humphrey, grant support; Heidelberg, grant support; Pharmacia/Upjohn, consultant, grant support.

maceutical Inc, Rockville, Md; and Pharmacia & Upjohn, Peapack, NJ. Pachymeters were loaned to the clinical centers by DGH Technology, Exton, Pa.

Drs Kass and Gordon take responsibility for authorship, financial disclosure, and copyright transfer for the group.

Corresponding author and reprints: Mae O. Gordon, PhD, OHTS Coordinating Center, Department of Ophthalmology and Visual Sciences, Washington University School of Medicine, Box 8203, 660 South Euclid, St Louis, MO 63110 (e-mail: mae@vrcc.wustl.edu).

## REFERENCES

1. Quigley HA. Number of people with glaucoma worldwide. *Br J Ophthalmol*. 1996; 80:389-393.
2. Sommer A, Tielsch JM, Katz J, et al. Racial differences in the cause-specific prevalence of blindness in East Baltimore. *N Engl J Med*. 1991;325:1412-1417.
3. US Department of Health, Education and Welfare. *Statistics on Blindness in the Model Reporting Area 1969-70*. Washington, DC: US Government Printing Office; 1973. DHEW publication NIH 73-427.
4. Quigley HA, Vitale S. Models of open-angle glaucoma prevalence and incidence in the United States. *Invest Ophthalmol Vis Sci*. 1997;38:83-91.
5. Hyman L, Wu SY, Connell AM, et al. Prevalence and causes of visual impairment in the Barbados Eye Study. *Ophthalmology*. 2001;108:1751-1756.
6. Dielemans I, Vingerling JR, Wolfs RC, Hofman A, Grobbee DE, deJong PT. The prevalence of primary open-angle glaucoma in a population-based study in the Netherlands: the Rotterdam Study. *Ophthalmology*. 1994;101:1851-1855.
7. Leske MC, Connell AM, Schachat AP, Hyman L, for the Barbados Eye Study Group. Prevalence of open-angle glaucoma. *Arch Ophthalmol*. 1994;112:821-829.
8. Mitchell P, Smith W, Attebo K, Healey PR. Prevalence of open-angle glaucoma in Australia: the Blue Mountains Eye Study. *Ophthalmology*. 1996;103:1661-1669.
9. Mason RP, Kosoko O, Wilson MR, Cowan CL Jr, Gear JC, Ross-Degnan D. National survey of the prevalence and risk factors of glaucoma in St Lucia, West Indies. I: prevalence findings. *Ophthalmology*. 1989;96:1363-1368.
10. Wallace J, Lovell HG. Glaucoma and intraocular pressure in Jamaica. *Am J Ophthalmol*. 1969;67:93-100.
11. Tielsch JM, Sommer A, Katz J, Royall RM, Quigley HA, Javitt J. Racial variations in the prevalence of primary open-angle glaucoma: the Baltimore Eye Survey. *JAMA*. 1991;266:369-374.
12. Leske MC, Connell AM, Wu SY, et al, for the Barbados Eye Studies Group. Incidence of open-angle glaucoma: the Barbados Eye Studies. *Arch Ophthalmol*. 2001; 119:89-95.
13. Leibowitz HM, Krueger DE, Maunders LR, et al. The Framingham Eye Study monograph: an ophthalmological and epidemiological study of cataract, glaucoma, diabetic retinopathy, macular degeneration, and visual acuity in a general population of 2631 adults, 1973-1975. *Surv Ophthalmol*. 1980;24(suppl): 335-610.
14. Armaly MF, Krueger DE, Maunders L, et al. Biostatistical analysis of the collaborative glaucoma study, I: summary report of the risk factors for glaucomatous visual-field defects. *Arch Ophthalmol*. 1980;98:2163-2171.
15. Quigley HA, Enger C, Katz J, Sommer A, Scott R, Gilbert D. Risk factors for the development of glaucomatous visual field loss in ocular hypertension. *Arch Ophthalmol*. 1994;112:644-649.
16. Kerrigan-Baumrind LA, Quigley HA, Pease ME, Kerrigan DF, Mitchell RS. Number of ganglion cells in glaucoma eyes compared with threshold visual field tests in the same persons. *Invest Ophthalmol Vis Sci*. 2000;41:741-748.
17. Eddy DM, Billings J. *The Quality of Medical Evidence and Medical Practice*. Washington, DC: National Leadership Commission on Health Care; 1987.
18. Boivin JF, McGregor M, Archer C. Cost effectiveness of screening for primary open angle glaucoma. *J Med Screen*. 1996;3:154-164.
19. Graham PA. The definition of pre-glaucoma: a prospective study. *Trans Ophthalmol Soc U K*. 1969;88:153-165.
20. Norskov K. Routine tonometry in ophthalmic practice, II: five-year follow-up. *Acta Ophthalmol (Copenh)*. 1970;48:873-895.
21. Levene RZ. Unilateral miotic therapy. *Trans Am Acad Ophthalmol Otolaryngol*. 1975;79:376-380.
22. David R, Livingston DG, Luntz MH. Ocular hypertension: a long-term follow-up of treated and untreated patients. *Br J Ophthalmol*. 1977;61:668-674.
23. Chisholm IA, Stead S, Tan L, Melenchuk JW. Prognostic indicators in ocular hypertension. *Can J Ophthalmol*. 1980;15:4-8.
24. Schulzer M, Drance SM, Douglas GR. A comparison of treated and untreated glaucoma suspects. *Ophthalmology*. 1991;98:301-307.
25. Becker B, Morton WR. Topical epinephrine in glaucoma suspects. *Am J Ophthalmol*. 1966;62:272-277.
26. Shin DH, Koller AE, Kass MA, Kaback MB, Becker B. Long-term epinephrine therapy of ocular hypertension. *Arch Ophthalmol*. 1976;94:2059-2060.
27. Kitazawa Y. Prophylactic therapy of ocular hypertension: a prospective study. *Trans Ophthalmol Soc N Z*. 1981;33:30-32.
28. Epstein DL, Krug JH Jr, Hertzmark E, Remis LL, Edelstein DJ. A long-term clinical trial of timolol therapy versus no treatment in the management of glaucoma suspects. *Ophthalmology*. 1989;96:1460-1467.
29. Kass MA, Gordon MO, Hoff MR, et al. Topical timolol administration reduces the



- incidence of glaucomatous damage in ocular hypertensive individuals: a randomized, double-masked, long-term clinical trial. *Arch Ophthalmol*. 1989;107:1590-1598.
30. Heijl A, Bengtsson B. Long-term effects of timolol therapy in ocular hypertension: a double-masked, randomized trial. *Graefes Arch Clin Exp Ophthalmol*. 2000;238:877-883.
  31. Rossetti L, Marchetti I, Orzalesi N, Scorpiglione N, Torri V, Liberati A. Randomized clinical trials on medical treatment of glaucoma: are they appropriate to guide clinical practice? *Arch Ophthalmol*. 1993;111:96-103.
  32. Gordon MO, Kass MA, and the Ocular Hypertension Study Group (OHTS). *Manual of Procedures*. Springfield, Va: National Technical Information Service; 1997. Publication PB97-148308NZ.
  33. Gordon MO, Kass MA, for the Ocular Hypertension Treatment Study Group. The Ocular Hypertension Treatment Study: design and baseline description of the participants. *Arch Ophthalmol*. 1999;117:573-583.
  34. Johnson CA, Keltner JL, Cello KE, et al. Baseline visual field characteristics in the ocular hypertension treatment study. *Ophthalmology*. 2002;109:432-437.
  35. Feuer WJ, Parrish RK II, Schiffman JC, et al. The Ocular Hypertension Treatment Study: reproducibility of cup/disk ratio measurements over time at an optic disc reading center. *Am J Ophthalmol*. 2002;133:19-28.
  36. Lee BL, Gutierrez P, Gordon M, et al. The Glaucoma Symptom Scale: a brief index of glaucoma-specific symptoms. *Arch Ophthalmol*. 1998;116:861-866.
  37. Ware JE, Snow KK, Kosinski M, Gandek B. *SF-36 Health Survey: Manual and Interpretation Guide*. Boston, Mass: The Health Institute, New England Medical Center; 1993.
  38. Keltner JL, Johnson CA, Quigg JM, Cello KE, Kass MA, Gordon MO, for the Ocular Hypertension Study Group. Confirmation of visual field abnormalities in the Ocular Hypertension Treatment Study. *Arch Ophthalmol*. 2000;18:1187-1194.
  39. Lan KK, DeMets DL. Changing frequency of interim analysis in sequential monitoring. *Biometrics*. 1989;45:1017-1020.
  40. Reboussin DM, DeMets DL, Kim KM, Lan KK. Computations for group sequential boundaries using the Lan-DeMets spending function method. *Control Clin Trials*. 2000;21:190-207.
  41. Gordon MO, Beiser JA, Brandt JD, et al. The Ocular Hypertension Treatment Study: baseline factors that predict the onset of primary open-angle glaucoma. *Arch Ophthalmol*. 2002;120:714-720.
  42. Collaborative Normal-Tension Glaucoma Study Group. Comparison of glaucomatous progression between untreated patients with normal-tension glaucoma and patients with therapeutically reduced intraocular pressures. *Am J Ophthalmol*. 1998;126:487-497.
  43. The AGIS Investigators. The Advanced Glaucoma Intervention Study (AGIS), 7: the relationship between control of intraocular pressure and visual field deterioration. *Am J Ophthalmol*. 2000;130:429-440.

#### Archives Web Quiz Winner

**C**ongratulations to the winner of our March quiz, Christina Canakis, MD, Vitreoretinal Fellow at the Department of Ophthalmology, Tulane University Medical Center, New Orleans, La. The correct answer to our March challenge was idiopathic polypoidal choroidal vasculopathy. For a complete discussion of this case, see the Clinicopathologic Reports, Case Reports, and Small Case Series section in the April ARCHIVES (Rosa RH, Davis JL, Eifrig CWG. Clinicopathologic correlation of idiopathic polypoidal choroidal vasculopathy. *Arch Ophthalmol*. 2002;120:502-508).

Be sure to visit the *Archives of Ophthalmology* World Wide Web site (<http://www.archophthalmol.com>) and try your hand at our Clinical Challenge Interactive Quiz. We invite visitors to make a diagnosis based on selected information from a case report or other feature scheduled to be published in the following month's print edition of the ARCHIVES. The first visitor to e-mail our Web editors with the correct answer will be recognized in the print journal and on our Web site and will also receive a free copy of the book *One Hundred Years of JAMA Landmark Articles*.



Montage fundus photograph of left eye (October 11, 1995) reveals peripapillary red-orange nodular lesions contiguous with elevated, sinuous, tubular lesions extending through the macular region. Note subretinal pigment epithelial hemorrhage superotemporal to the optic disc and the red-orange nodular or polypoidal lesions just posterior to the hemorrhage (arrow). Also note the serosanguineous retinal detachment and few hard exudates inferotemporally.